

ATOMAA WDH



#WDH 2022 House of Stone & Water Scottish Borders, UK Countryside House 248 sqm

Nestled in the Scottish Borders countryside in the south of Scotland, House of stone and water aims to capture the landscape of the area while subtly bringing it into the interior of the home. In this context, known for its vegetation and breathtaking surroundings, the project makes use of the local flora to shape its direct landscape.

The composition of the house is made up of five blocks, each containing different functions and expressing varied levels of privacy. The blocks slip and slide along one another to create an arrangement which frames a small patio courtyard and outdoor pool. Movement within the house parallels winding water in a rocky brook.

The fenestration allows for a high level of permeability and intertwines daily activities with the outside, thus connecting all functions in a flow of open and closed spaces. The void between the solid volumes becomes the mediator of daily life functions.

The water element of the house sits at the center of the composition and can be seen from the three blocks containing the entertainment functions. A shaded portico allows for a covered outdoor area and acts as a floating link

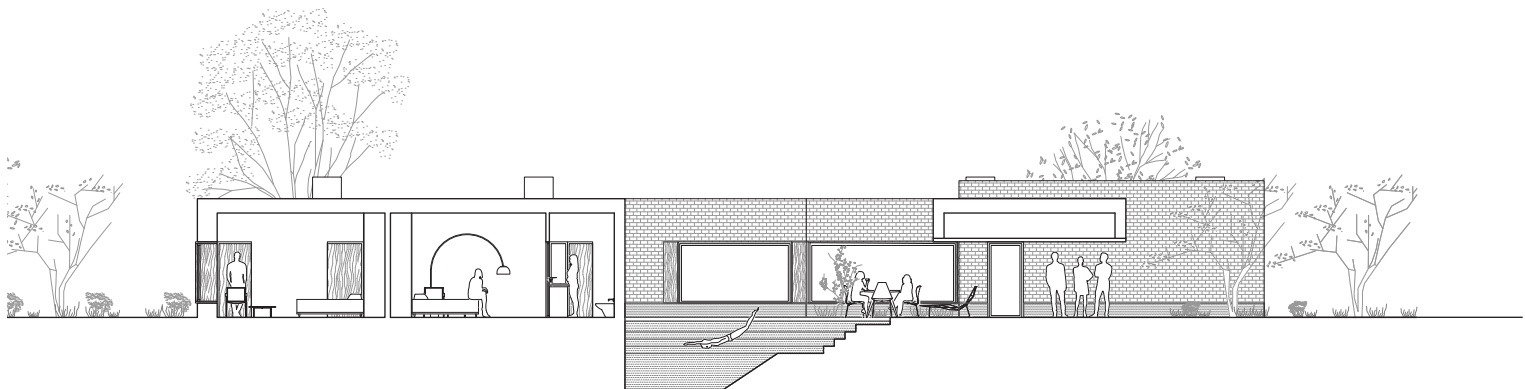
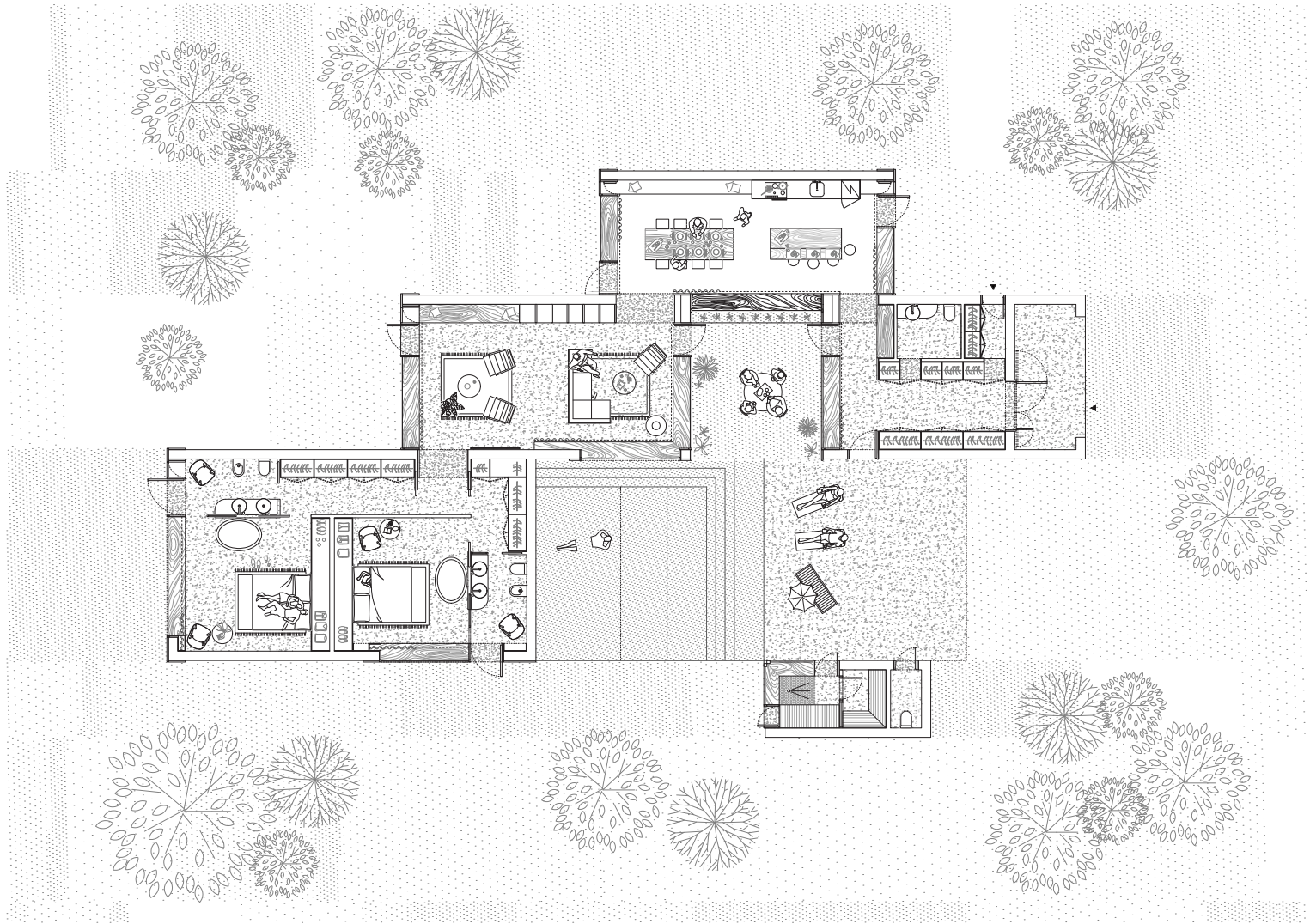
between the main house and the detached spa and change room.

In a smaller scale, the design of the facade reflects the communicative, open aspect of the house. The windows integrate inhabitable surfaces in its geometry, creating a new degree of contact to the outside landscape. The transparent elements of the building are designed not only to frame the landscape, but are also volumetrically composed to create significant yet inhabitable thresholds between the cosy interior and the vast countryside.

The brick, the mortar joints and the external base in polished slate-colored concrete together make up a monochromatic system of monolithic blocks in composition in the landscape.



#WDH 2022 House of Stone & Water Scottish Borders, Countryside 248 sqm House UK



CREDITS

Client: Private

Typology: Countryside house

Place: Scottish Borders, UK

Year: 2022

Sqm: 248

Architectural Design: ATOMAA

Design Team: Philip Koleysohn, Letizia Ceriani,
Konstantinos Ballis, Yolanda Guastaferro, Valentina Pastori,
Matteo Previato

Photography: Alberto Strada

Concrete Specialist: Giambattista Caldara