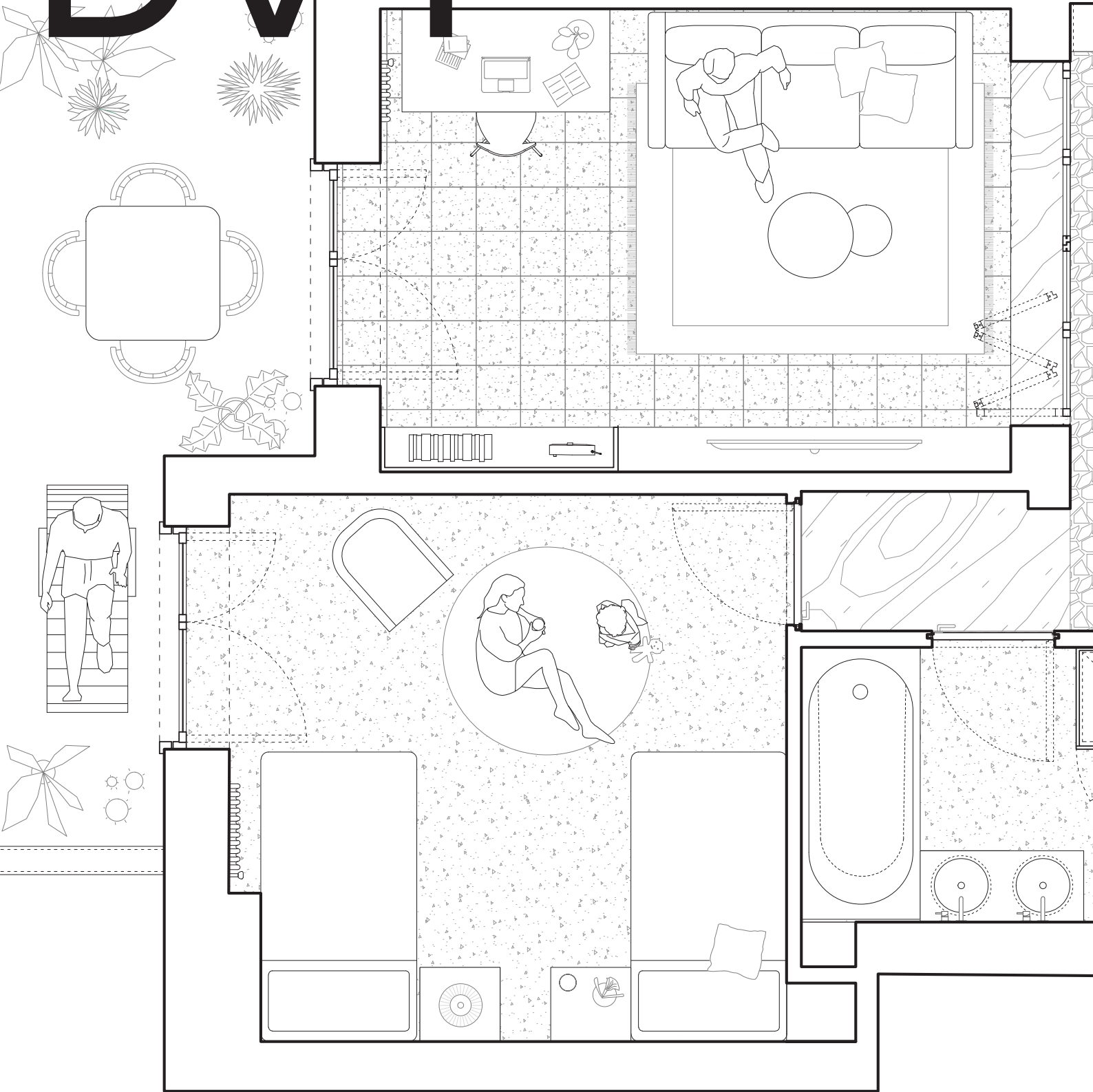


ATOMAA

DVT



“Alice looked round her in great surprise. ‘Why, I do believe we’ve been under this tree the whole time! Everything’s just as it was!’
‘Of course it is,’ said the Queen, ‘what would you have it?’
‘Well, in our country,’ said Alice, still panting a little, ‘you’d generally get to somewhere else — if you ran very fast for a long time, as we’ve been doing.’
‘A slow sort of country!’ said the Queen. ‘Now, here, you see, it takes all the running you can do, to keep in the same place.
If you want to get somewhere else, you must run at least twice as fast as that!’
”

Lewis Carroll, Through the Looking Glass

“Organisms in nature have survived and thrived for billions of years because they have one powerful trait at their disposal – they are adaptive”
- Rafe Sagarin

The house was tired, the light no longer illuminated it as well as before, the spaces seemed to tighten more and more, especially after the arrival of the two young children. Those long corridors in which the flow of light became a challenge, made the tiny rooms even smaller.

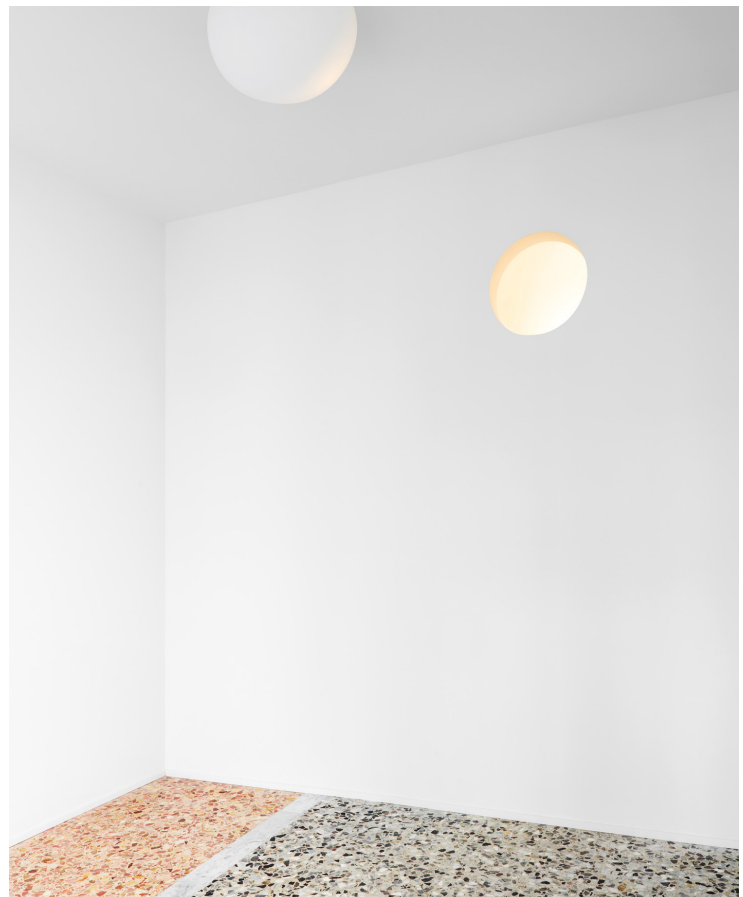
The project tries to adapt to the family, with small, timely, gentle changes: the demolition of the walls facing the corridors; the re-appropriation of the spaces once lost; the obtaining of an extra room by moving the kitchen into the new regained environment at the heart of the home; the slight enlargement of the bathroom to accommodate two sinks and laundry area.

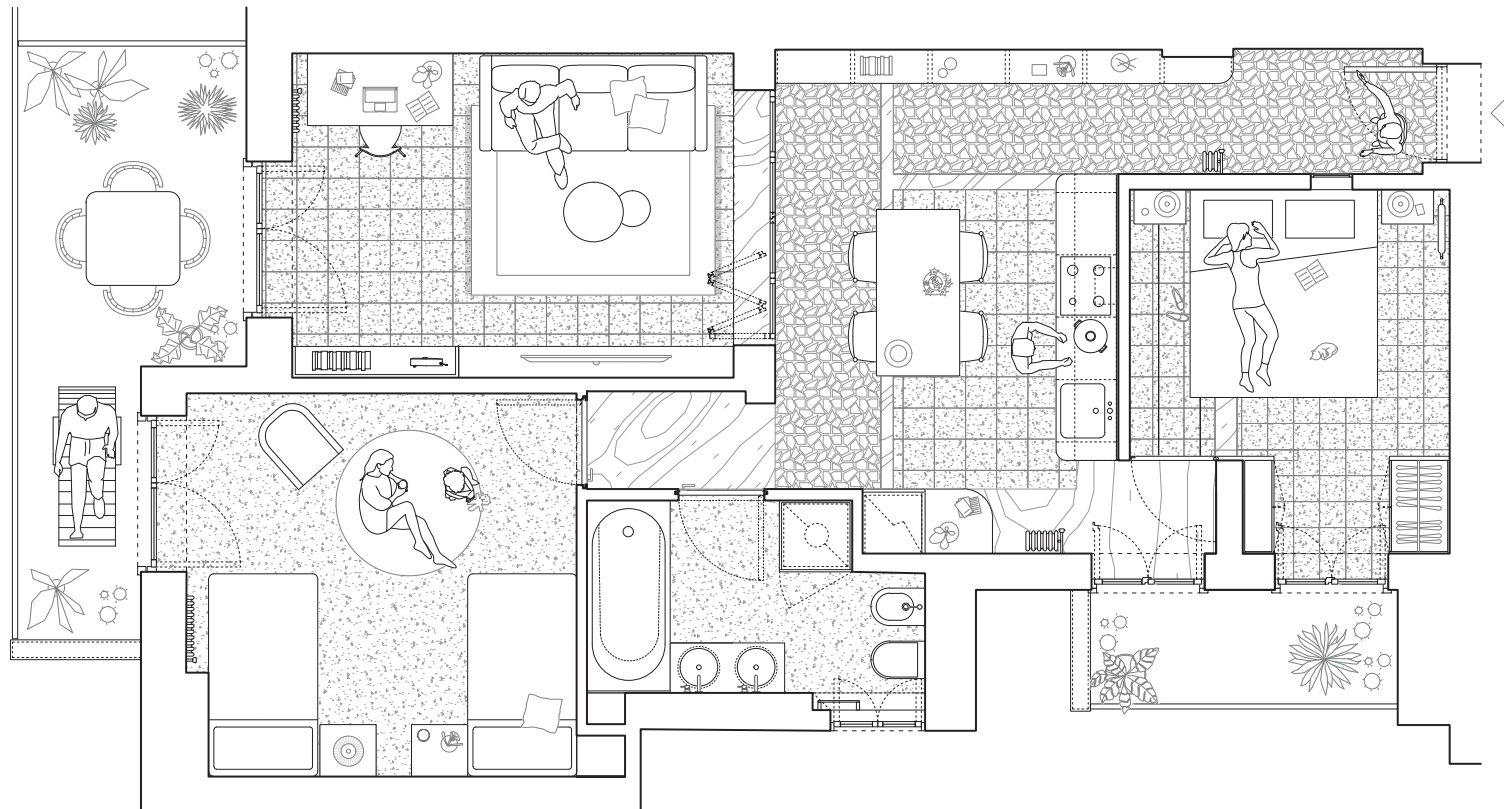
The atmosphere of the house as it was, was characterized by the original textures of the floors, some of which came from the work and research of previous designers. For this reason we have chosen to keep them wherever possible.

The new spatial distribution leaves the traces in the pavement exposed, where the dividing walls used to be. The project does not erase those signs, but accepts them for what they are; now combinations of different materials coexist for what they are, and what they were.

The resins of the bathroom and of the children’s room contrast the rich design of the existing floors with smooth surfaces, where the soft colour reflects the light in shimmering shades.

The attention to detail and the new elements introduced try to remove the design and disappear in the general array of spaces.
The small skylights introduced have a circular shape as do the light fittings; the doors, if integrated with the walls, take their colours and proportions, reaching the ceiling.





CREDITI

Client: Private
Typology: Apartment
Place: Milan, IT
Year: 2022
Sqm: 70
Architectural Design: ATOMAA
Design Team: Samantha Furlotti, Giulia Barilli
Photography: Francesco Carredda
General Contractor: Relazioni Edili
Carpenter: L'Interno di Enrico Ornaghi
Resin: Parquet Italia s.a.s.
Windows and Doors: Fratelli Bergamaschi
Steelwork and Mirrors: Projet Metal