

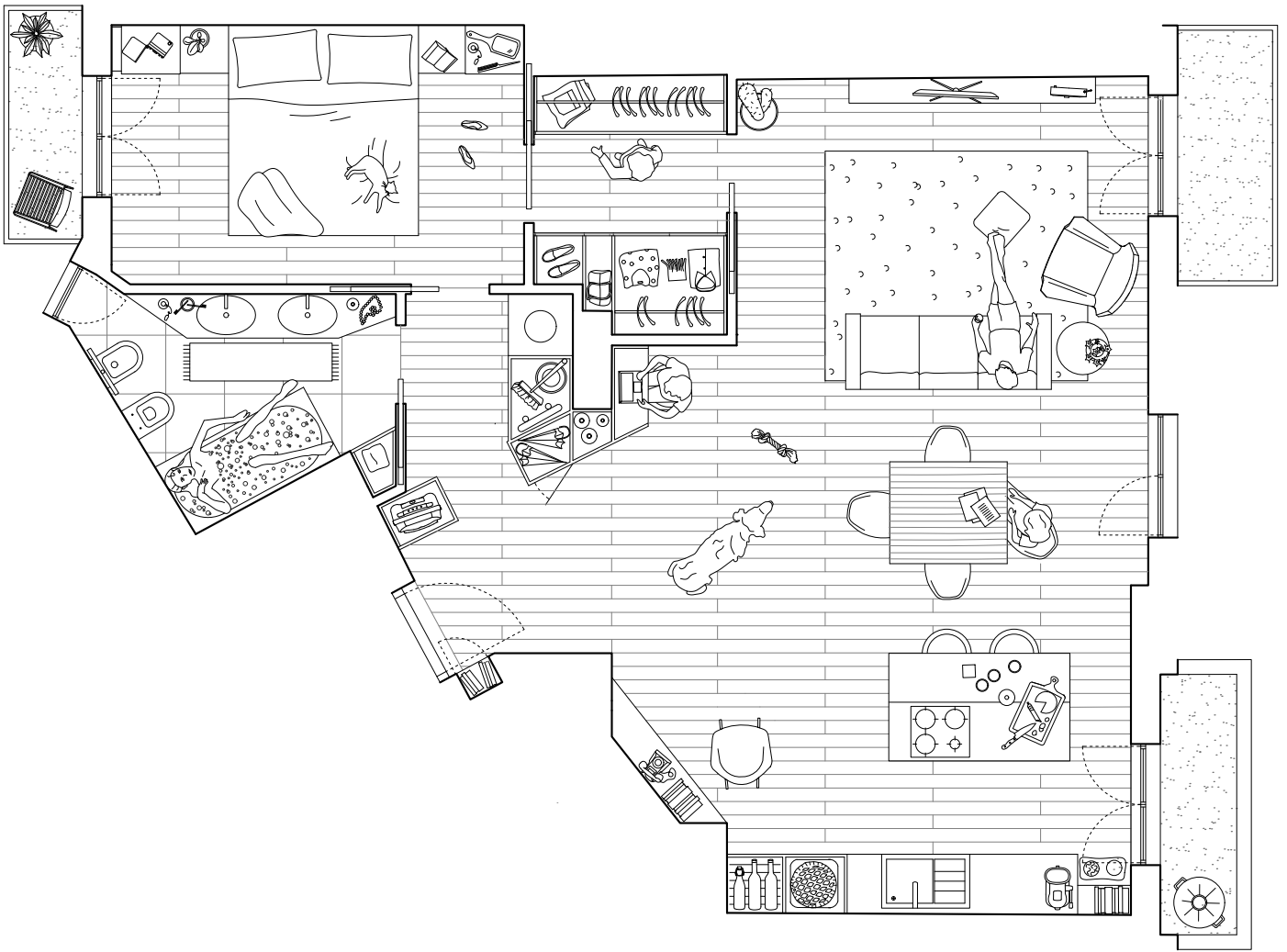


The redistribution of the service spaces aims to stretch the living area as much as possible, and in turn, towards the part of the dwelling illuminated by direct sunlight. The beautiful south-west exposure welcomes an abundance of sunlight through the opening of the three large windows in the living area, inviting the sunset into the living room.

The primary living space is composed of a series of elements; the wall of the equipped kitchen, the island, the dining area and the living area. On one side, the furnished entrance core extends and houses a small study area.

The serving spaces overlap the elements of circulation and the entrance, as they define the edges and borders. In the entrance hall, a functional wall, made of white polished custom designed furniture, contains a place to house jackets and suitcases, cleaning tools, and a hidden door to access the more private area of the house.





Credits

Client: Private

Tipology: Apartment

Place: Milan, Italy

Year: 2017.09

Sqm: 71

Architectural Design: ATOMAA

Design Team: Danilo Monzani, Andrea Zammataro

Photography: Luca Broglia, Claudio Tajoli

General contractor: Ristrutturiamo Srls

Kitchen: Scavolini